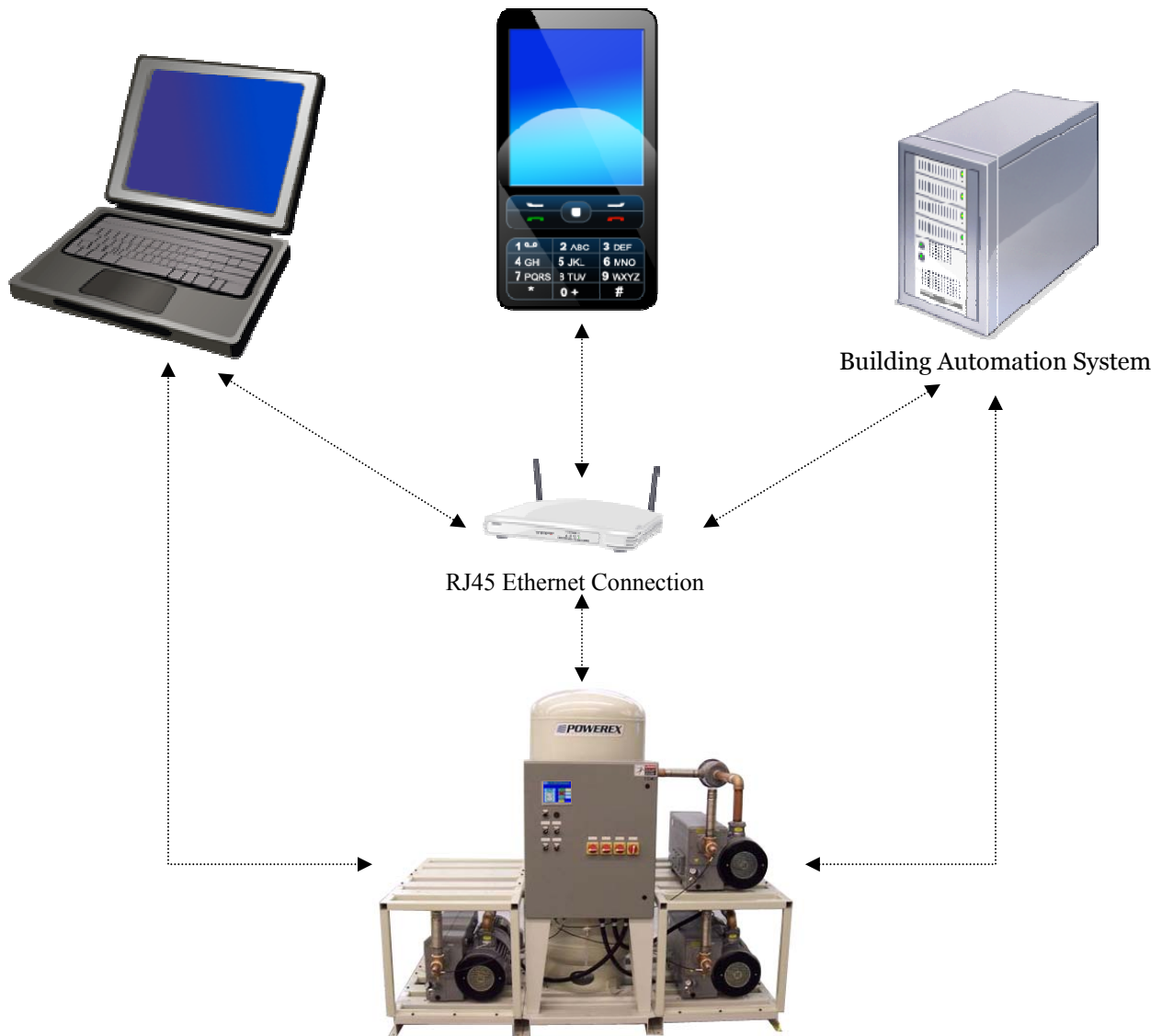




## Powerex Building Management Integrator (PBMI) For Medical Air and Medical Vacuum Systems



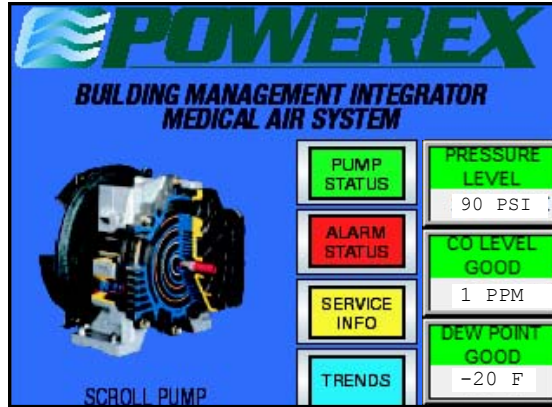
- 6" color touch screen panel
  - BAS communication gateway (BACnet<sup>®</sup> Protocol)
  - Built in webpage with email notifications

# PBMI SCREENS AND FEATURES

## MEDICAL AIR

The PBMI screens will display the following:

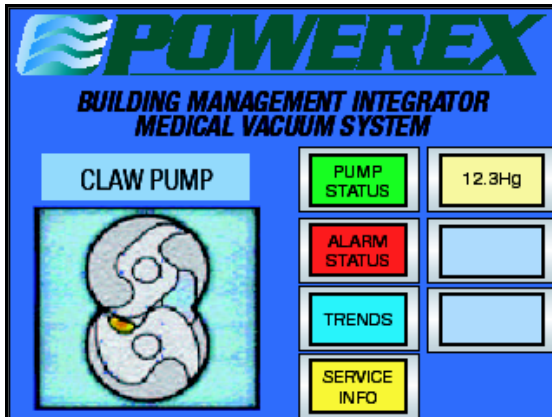
- System pressure
- Compressor type
- Pump status (for each compressor)
- Pump run hours (per compressor)
- Model and Serial number of the unit
- Carbon Monoxide reading
- Dew point reading
- Alarm screens
- Fault indication
- Alarm history
- Maintenance screens
  - Run hours (total and per compressor)
  - Hours until scheduled maintenance alert
  - Required maintenance intervals for each pump
  - Dryer service alerts



Alerts will be displayed and email notifications sent for any of the following:

- Compressor maintenance
- Dryer maintenance
- High CO alarm
- High Dew point alarm
- Reserve pump in use
- Any general fault alarm

## MEDICAL VACUUM



Alerts will be displayed and email notifications sent for any of the following:

- Pump maintenance
- Reserve pump in use
- Any general fault alarm

The PBMI screens will display the following:

- System pressure
- Pump type
- Pump status (for each pump)
- Pump run hours (per pump)
- Model and Serial number of the unit
- Alarm screens
- Fault indication
- Alarm history
- Maintenance screens
  - Run hours (total and per pump)
  - Hours until scheduled maintenance alert
  - Required maintenance intervals for each pump

NOTE: PBMI controls are optional for most Medical Air and Vacuum system configurations.



150 Production Drive, Harrison, Ohio 45030  
 Telephone: (888) 769-7979 Fax: (513) 367-3125  
 www.powerexinc.com

Distributed by: