



## Dewpoint Monitor

### Engineering Specifications

Dew Point Range: see chart below

Sensor Output: 0V-5V

Alarm Indication: Audible Alarm, Red Alarm Light with push to test, and push to acknowledge

Alarm Output: 10 AMP @ 115 VAC Rated Normally closed Contact.

Alarm Horn: 95+ dB(A), at 120 VAC, at 24 inches (61 cm), at 25°C

Alarm Set Point: see chart below

Dryer Control Signals: 10 AMP @ 115VAC Rated Normally Open Contact

Dimensions: 9.1" x 5.5" x 5"

Net Weight: 5 lbs.

Enclosure: UL Listed Polycarbonate NEMA-4X Electrical Box.

Power Requirements: 110-120VAC

Fuse: Type FNM 1.25-amp

Operating Pressure: 10-150 psig with a minimal flow rate

Operating Temperature: 32°F to 131°F

### Features

- Patented auto calibration to ensure accuracy
- Polymer sensor technology for fast response times
- Sensor is immune to water, particulate contamination, oil vapor and most chemicals
- Visual and audible alarms for high dew point (includes dry contacts)
- Dew point demand purge control feature to control desiccant air dryers

Model	Dew Point Range	Enclosure	High Alarm	Contact Open for Purge rate fixed mode	Contact Closed for Purge Saver mode
PDPM1001JJ*	-60°F to +54°F	NEMA 4	+35°F	-10°F to +54°F	Below -15°F
PDPM1001AJ	-60°F to +54°F	NEMA 4	+35°F	-10°F to +54°F	Below -15°F
PDPM1001JL**	-60°F to +54°F	NEMA 4	+40°F	N/A	N/A
PDPM1004AJ	-60°F to +54°F	NEMA 4	-20°F	-40°F to +54°F	Below -45°F
PDPM2001AJ	-148°F to +32°F	NEMA 4	Specified	N/A	N/A

\*-JJ model comes with power cord. -AJ model does not.

\*\* -JL model is commonly used with refrigerated dryers.

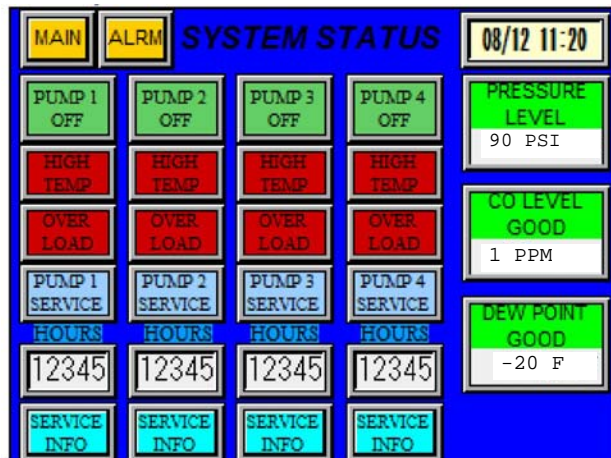
## Integrated Dewpoint Monitor

For Air Systems with HMI or PBMI controls



### MAIN PAGE

- Displays Pressure level and Dew Point level
- Pressure level will change from green to orange when high
- Dew Point level will change from green to orange when approaching alarm level; will change from orange to red when in alarm
- System Status, Alarm Status, Service Info and Trends buttons will redirect to those specific pages



### SYSTEM STATUS PAGE

- Displays operating status, run hours, NFPA alarms, and Service alert of each pump on the system
- Displays Pressure level and Dew Point level and status like on MAIN page

Application	Dew Point Range	High Alarm	Contact Open for Purge rate fixed mode	Contact Closed for Purge Saver mode
Medical	-70°F to +54°F	+35°F	-10°F to +54°F	Below -15°F
Laboratory	-70°F to +54°F	-20°F	-40°F to +54°F	Below -45°F

### Dew Point Monitor Features

- Patented auto calibration to ensure accuracy
- Polymer sensor technology for fast response times
- Sensor is immune to water, particulate contamination, oil vapor and most chemicals
- Visual and audible alarms for high dew point (includes dry contacts)
- Dew point demand purge control feature to control desiccant air dryers

### Engineering Specifications

- Dew Point Range: see chart below
- Sensor Output: 0V-5V
- Alarm Indication: Audible Alarm, Visual Alarm indicator on touch screen control panel
- Alarm Output: 10 AMP @ 115 VAC Rated Normally closed Contact.
- Alarm Horn: 95+ dB(A), at 120 VAC, at 24 inches (61 cm), at 25°C
- Alarm Set Point: see chart below
- Dryer Control Signals: 10 AMP @ 115VAC Rated Normally Open Contact
- Operating Pressure: 10-150 psig with a minimal flow rate
- Operating Temperature: 32°F to 131°F