

Medical Compressed Air Filter System

Please read and save these instructions. Read carefully before attempting to assemble, install, operate or maintain the product described. Protect yourself and others by observing all safety information. Failure to comply with instructions could result in personal injury and/or property damage! Retain instructions for future reference.

Description

The Powerex compressed air filter system is especially designed for use in medical air applications. This filter system meets NFPA 99 requirements by having two stages of filtration to remove oil vapors and water aerosols, odors, and solid particles as small as 0.5 micron with 99.9998% efficiency. The filter system is completely duplexed to provide uninterrupted service and is sized to perform with 100% peak demand through either bank of filters. The filter elements are made with continuous visual monitors.

Safety Guidelines

This manual contains information that is very important to know and understand. This information is provided for SAFETY and to PREVENT EQUIPMENT PROBLEMS. To help recognize this information, observe the following symbols.

⚠ DANGER *Danger indicates an imminently hazardous situation which, if not avoided, will result in death or serious injury.*

⚠ WARNING *Warning indicates a potentially hazardous situation which, if not avoided, could result in death or serious injury.*

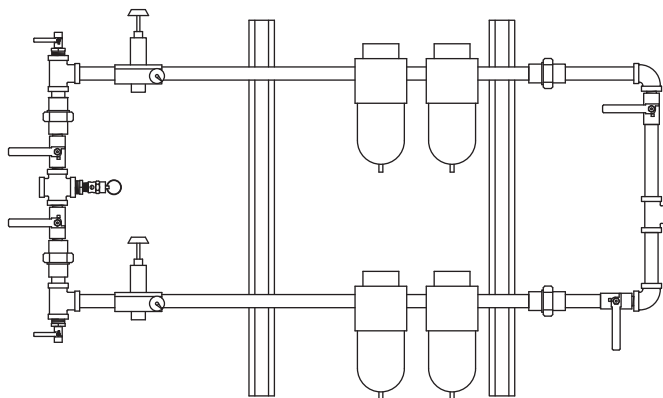
⚠ CAUTION *Caution indicates a potentially hazardous situation which, if not avoided, MAY result in minor or moderate injury.*

NOTICE *Notice indicates important information, that if not followed, may cause damage to equipment.*

Unpacking

After unpacking the unit, inspect carefully for any damage that may have occurred during transit. Make sure to tighten fittings, bolts, etc., before putting unit into service.

⚠ WARNING *Do not operate unit if damaged during shipping, handling or use. Damage may result in bursting and cause injury or property damage.*



⚠ DANGER

Breathable Air Warning

This filter system is NOT equipped and should NOT be used "as is" to supply breathing quality air. For any application of air for human consumption, you must fit the filter system with suitable in-line safety and alarm equipment. This additional equipment is necessary to properly filter and purify the air to meet minimal specifications for Grade D breathing as described in Compressed Gas Association Commodity Specification G 7.1 - 1966, OSHA 29 CFR 1910. 134, and/or Canadian Standards Associations (CSA).

DISCLAIMER OF WARRANTIES

IN THE EVENT THE FILTER SYSTEM IS USED FOR THE PURPOSE OF BREATHING AIR APPLICATION AND PROPER IN-LINE SAFETY AND ALARM EQUIPMENT IS NOT SIMULTANEOUSLY USED, EXISTING WARRANTIES ARE VOID, AND POWEREX DISCLAIMS ANY LIABILITY WHATSOEVER FOR ANY LOSS, PERSONAL INJURY OR DAMAGE.

General Information

The Powerex compressed air filter system has two series or “banks” of filters. The filters in both banks are the same. Entering air is controlled by quarter turn ball valves to direct the air into one bank of filters at a time.

The first 0.5 micron coalescing filter collects submicronic solid particles and remaining liquid aerosols. A manual drain is supplied for this filter element.

The second filter element contains an activated carbon cartridge for removing unpleasant odors in the air stream.

The second bank containing identical filters is available for back-up operation during system maintenance.

The filters contain visual monitors that change color from green to red as the filters collect particles.

A separate pressure regulator and gauge is supplied for each bank of filters to allow easy adjustment of air pressure to the desired distribution system and for random air samples.

The ASME code safety valve at the outlet of the filter system is set at 75 PSI and is non-adjustable.

⚠WARNING

The compressed air filter system will not remove carbon monoxide or other toxic gases.

Installation

The frame work typically supplied with the filter system allows easy wall mounting. Fasteners capable of supporting the weight of the system must be used. Easy accessibility should be provided for performing routine maintenance. The filter system should be installed after an air line dryer, if used, and before any air line monitoring equipment.

After assembly, open all valves in the filter system except the system vents. Slowly pressurize and adjust regulator to desired pressure. Check for leaks with a soapy water solution. Release pressure slowly and remedy any leaks.

Operation

1. Ensure the system vents are closed and then slowly open the quarter turn valves for the upper filter bank in the order given below:
 - a. Inlet valve
 - b. Outlet valve
2. Close the valves for the lower filter bank in the order given below:
 - a. Inlet valve
 - b. Outlet valve
3. Slowly open the lower system vent to relieve any pressure. Then close the vent.

Maximum Air Pressure	Maximum Air Temperature	Maximum Air Pressure After Regulators
150 PSIG	125° F	75 PSIG

4. Adjust the output air pressure with the regulator by turning the knob clockwise for increased pressure or counterclockwise for decreased pressure.

The outlet safety valve will vent to atmosphere if the pressure exceeds 75 PSI.

Maintenance

⚠WARNING

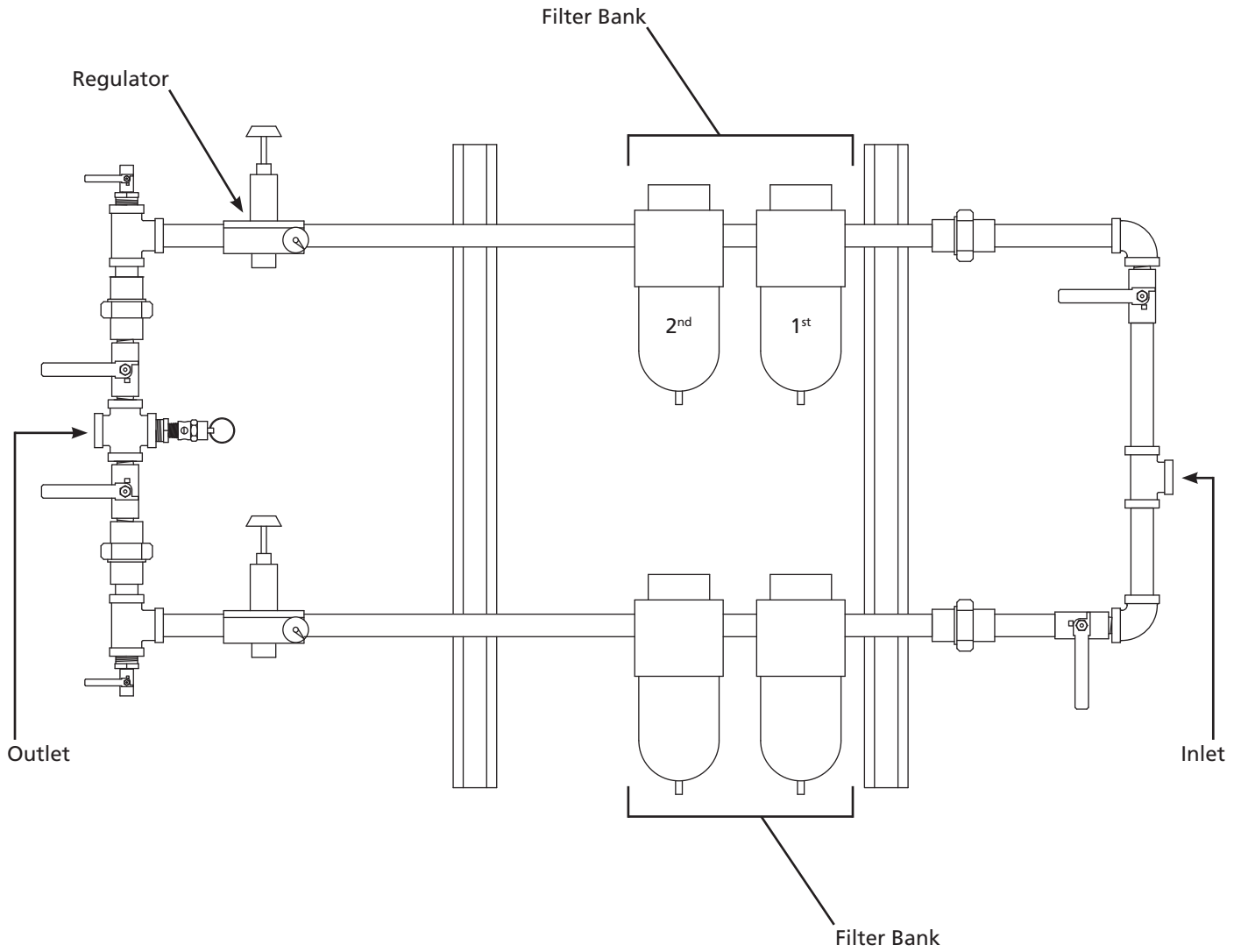
Relieve all pressure from the filter bank being serviced before performing any maintenance.

Replacement is necessary when the filter element indicator becomes red. Change the air flow to the opposite filter bank prior to maintenance.

Alternate between filter banks at least annually to perform preventative maintenance.

Replace each filter element and the auto drain valve annually.

Replacement Parts



Part Description	MFP-050-342 MFP-060-362				Qty. per Bank
	MFP-040-342	MFP-070-382	MFP-110-382	MFP-220-3A2	
0.5 Micron filter element (1st)	ST178107AV	ST178121AV	ST178125AV	ST178131AV	1
Activated carbon element (2nd)	ST178111AV	ST178123AV	ST178129AV	ST178135AV	1
Auto drain valve	ST178103AV	ST178103AV	ST178103AV	ST178103AV	1

Powerex Limited Warranty

Warranty and Remedies.

(a) General. Powerex warrants each Compressor System, Vacuum System, Vacuum Pump, Compressor Air-End, or Powerex branded Accessory (collectively "Products", individually each a "Product") to be free from defects in material and workmanship ("Defects") at the date of shipment. EXCEPT AS SET FORTH BELOW, NO OTHER WARRANTY, WHETHER EXPRESS OR IMPLIED, INCLUDING ANY WARRANTY OF MERCHANTABILITY OR FITNESS FOR A PARTICULAR PURPOSE, SHALL EXIST IN CONNECTION WITH THE SALE OR USE OF SUCH PRODUCTS. TO THE EXTENT PERMITTED BY LAW, ANY AND ALL IMPLIED WARRANTIES ARE EXCLUDED. All claims under this warranty must be made in writing and delivered to Powerex, or such claim shall be barred. Upon timely receipt of a claim, Powerex shall inspect the Product claimed to have a Defect, and Powerex shall repair, or, at its option, replace, free of charge, any Product which it determines to have had a Defect at the time of shipment from Powerex; provided, however, that if circumstances are such as to preclude the remedying of Defect by repair or replacement, Powerex shall, upon return of the Product, refund to buyer any part of the purchase price of such Products paid to Powerex. Freight for returning Products to Powerex for inspection shall be paid by buyer. The warranties and remedies herein are the sole and exclusive remedy for any breach of warranty or for any other claim based on any Defect, or non-performance of the Products, whether based upon contract, warranty or negligence.

(b) Initial Period of Warranty – Parts and Labor. Powerex warrants and represents all Products shall be free from Defects for the first twelve (12) months from the date of shipment by Powerex, or five thousand (5,000) hours of use, whichever occurs first. During such warranty period, Powerex shall be fully liable for all Defects in the Products (the "Product Defects"), i.e., all costs of repair or replacement, which may include "in and out" charges, so long as the Products are located in the continental United States, and the Products are reasonably located and accessible by service personnel for removal. "In and out" charges include the costs of removing a Product from buyer's equipment for repair or replacement.

(c) Additional Period of Warranty – Parts Only (No Labor). In addition to the above, Powerex warrants each Powerex branded Compressor Air-End, and Vacuum Pump shall be free of Defects for a period of thirty-six months from the date of shipment of Product, or 10,000 hours of use, whichever occurs first. Supplier's repair or replacement of any Product shall not extend the period of any warranty of any Product. This warranty applies to the exchange of part(s) found to be defective by an Authorized Powerex Service Center only.

(d) Coverage. The above mentioned warranty applies to Powerex manufactured units or systems only.

(e) Exceptions. Notwithstanding anything to the contrary herein, Powerex shall have no warranty obligations with respect to Products:

- (i) that have not been installed in accordance with Powerex's written specifications and instructions;
- (ii) that have not been maintained in accordance with Powerex's written instructions;
- (iii) that have been materially modified without the prior written approval of Powerex; or
- (iv) that experience failures resulting from operation, either intentional or otherwise, in excess of rated capacities or in an otherwise improper manner.

(f) The warranty provided herein shall not apply to: (i) any defects arising from corrosion, abrasion, use of insoluble lubricants, or negligent attendance to or faulty operation of the Products; (ii) ordinary wear and tear of the Products; or (iii) defects arising from abnormal conditions of temperature, dirt or corrosive matter; (iv) any OEM component which is shipped by Powerex with the original manufacturer's warranty, which shall be the sole applicable warranty for such component.

Limitation of Liability. TO THE EXTENT ALLOWABLE UNDER APPLICABLE LAW, NOTWITHSTANDING ANYTHING TO THE CONTRARY HEREIN, UNDER NO CIRCUMSTANCES SHALL POWEREX BE LIABLE FOR ANY INCIDENTAL, CONSEQUENTIAL, PUNITIVE, SPECULATIVE OR INDIRECT LOSSES OR DAMAGES WHATSOEVER ARISING OUT OF OR IN ANY WAY RELATED TO ANY OF THE PRODUCTS OR GOODS SOLD OR AGREED TO BE SOLD BY POWEREX TO BUYER. TO THE EXTENT ALLOWABLE UNDER APPLICABLE LAW, POWEREX'S LIABILITY IN ALL EVENTS IS LIMITED TO, AND SHALL NOT EXCEED, THE PURCHASE PRICE PAID.

Warranty Disclaimer. Powerex has made a diligent effort to illustrate and describe the Products in this literature accurately; however, such illustrations and descriptions are for the sole purpose of identification, and do not express or imply a warranty that the Products are merchantable, or fit for a particular purpose, or that the Products will necessarily conform to the illustrations or descriptions.

Product Suitability. Many jurisdictions have codes and regulations governing sales, construction, installation, and/or use of Products for certain purposes, which may vary from those in neighboring areas. While Powerex attempts to assure that its Products comply with such codes, it cannot guarantee compliance, and cannot be responsible for how the product is installed or used. Before purchase and use of a Product, please review the Product applications, and national and local codes and regulations, and be sure that the Product, installation, and use will comply with them.

Claims. Claims pertaining to the Products, with the exception of warranty claims, must be filed with Powerex within 6 months of the invoice date, or they will not be honored. Prices, discounts, and terms are subject to change without notice or as stipulated in specific Product quotations. All agreements are contingent upon strikes, accidents, or other causes beyond our control. All shipments are carefully inspected and counted before leaving the factory. Please inspect carefully any receipt of Products noting any discrepancy or damage on the carrier's freight bill at the time of delivery. Discrepancies or damage which obviously occurred in transit are the carrier's responsibility and related claims should be made promptly directly to the carrier. Returned Products will not be accepted without prior written authorization by Powerex and deductions from invoices for shortage or damage claims will not be allowed. **UNLESS OTHERWISE AGREED TO IN WRITING, THESE TERMS AND CONDITIONS WILL CONTROL IN ANY TRANSACTION WITH POWEREX** any different or conflicting terms as may appear on any order form now or later submitted by the buyer. All orders are subject to acceptance by Powerex.