

## Submittal Data Sheet

### Features

- Manifold outlet is 1"-11-½ NPSM RH-INT.
- High quality brass master shut-off valve included.
- Flexible 72" CGA specific pigtails ⅜" ID urethane wrapped nylon lined, rated for 2,250 psi.
- 400 psi relief valve with ⅜" fnpt pipe away adaptor.
- Wall mounting brackets included.
- CGA specific check valve connections and gas tight cap & chains.
- Cleaned for use with oxygen in accordance with CGA G4.1.
- Tested and built in accordance with CGA and NFPA 99 guidelines.
- Made in the USA.

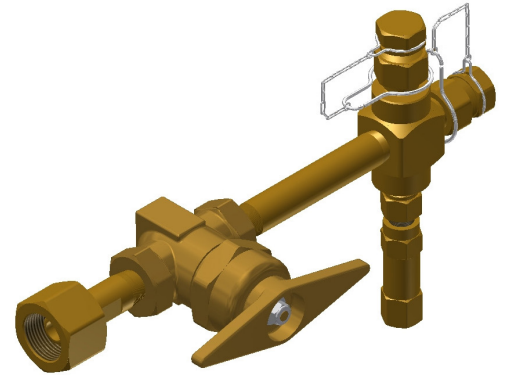
### Ordering Information

Easy to use modular ordering system.

*LBLL, LBL, or LCL to specify the Liquid By Liquid Header that meets your needs.*

### Model Numbering:

PX- V G N 2 X X N 72



#### S = Size of Valve

2 - ½" valve	4 - 1" valve	6 - 1 ½" valve
3 - ¾" valve	5 - 1 ¼" valve	7 - 2" valve

#### G = Gas Type

320 - Carbon Dioxide	346 - Medical Air	580 - Inert Gases
326 - Nitrous Oxide	540 - Oxygen	

#### V = Valve Box

V - Type of Valve Box

### Part No. Examples

**PX-LBL540012XXN72** = Features right & left side headers with one Oxygen port on each header.

**PX-LBLL540012XXN72** = Features left side header only with one Oxygen port on the header.